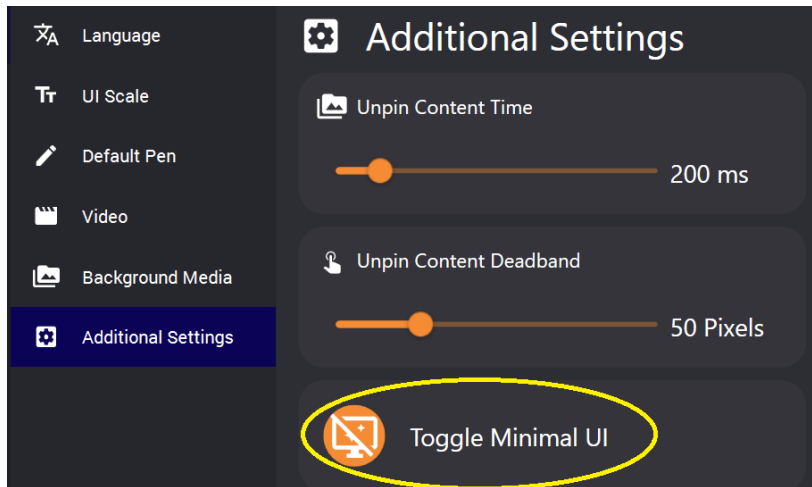
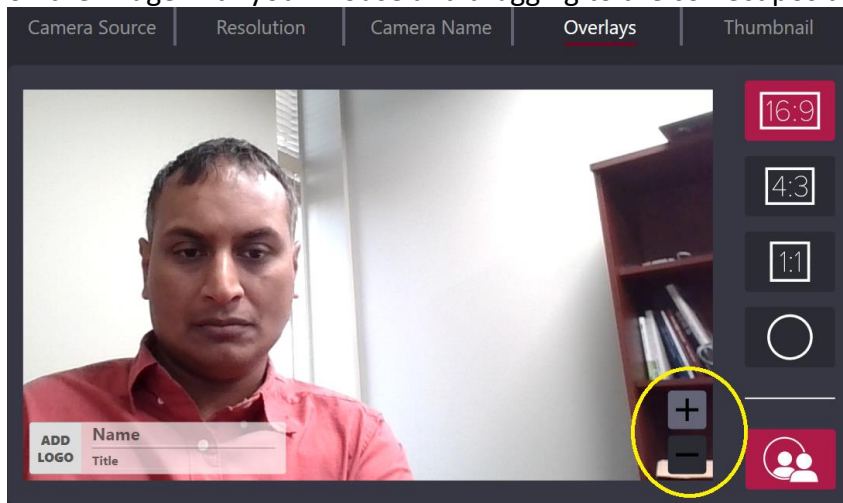


R 3.1.0 Change List

- Minimal UI Mode – eliminates all the UI in the workspaces to have even a cleaner look.
Settings->User Interface->Additional Settings

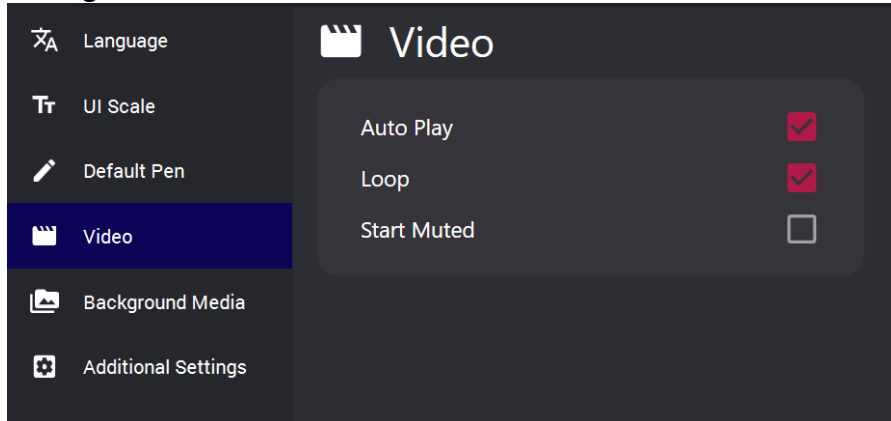


- Camera Image can be zoomed and panned to crop unwanted sections of the image. Use the +/- buttons or SHIFT+Mouse Wheel to set the zoom, and pan the image by clicking on the image with your mouse and dragging to the correct position.



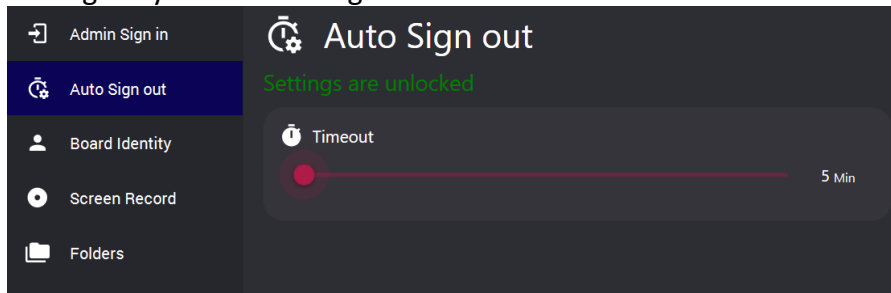
- Video playback default settings – allow you to configure how the video will be played when it is opened to eliminate clicks during a meeting.

Settings->User Interface->Video

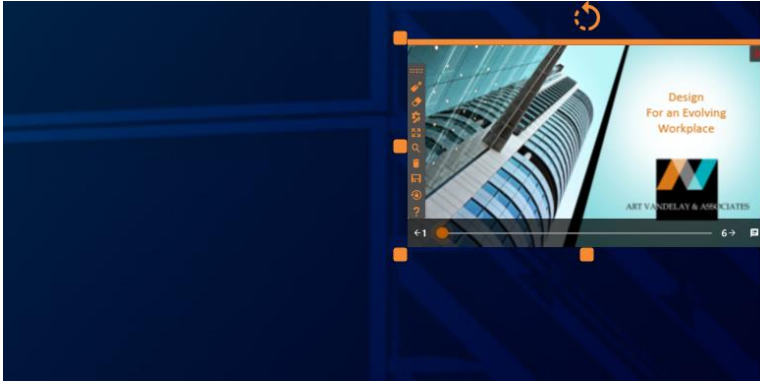


- Auto Sign-Out (IWB only) – automatically logs users out of AD/O365 account and exits presentations in case of no activity.

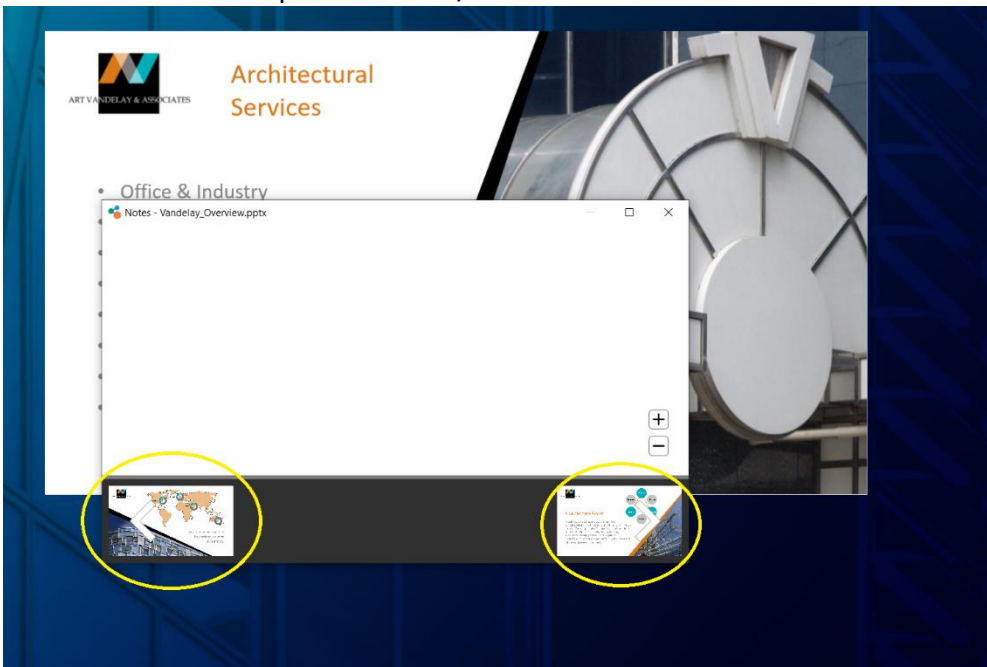
Settings->System->Auto Signout



- Fixed bugs related to focus of document and keyboard shortcuts. When a document is in focus, keyboard shortcuts will always now work.
- Fixed bugs with toolbars, dialog boxes and UI scaling. When the document size is reduced, all the toolbars, dialogs and UI scale accordingly so they are never cut off.



- PDFs and documents now render sharply, no matter how much you zoom in. So, detailed PDFs can be zoomed in as much as needed without any loss of resolution or clarity.
- All pop-ups and dialog boxes appear near the user's click. Reduces amount of mouse/finger movement to activate, especially for larger screen sizes.
- PPT notes now show previous slide/next slide thumbnail

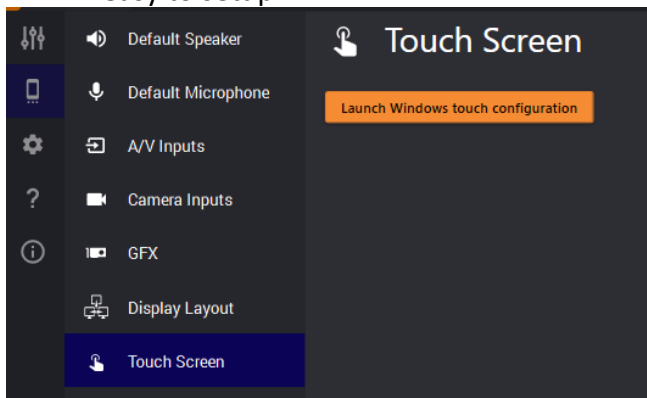


- PPT notes font sized can be changed using the +/- buttons
- Workspaces automatically enter fullscreen mode – just like Zoom/Teams do when screen sharing starts. Reduces keystrokes to go full screen when sharing or recording content and provides a cleaner look.

- Load times improved significantly
- Teams/Zoom camera switching improved significantly. User can also switch the camera BACK TO Teams/Zoom when exiting the workspace. User can also switch the camera at any time using the new switch button in PITCH



- Completely revamped integrated browser – fixes issues with various video codecs, Vimeo files, streaming codecs for much better website/video playback functionality
- Screen record allows you to set bitrate OR quality. Looks like some video cards/codecs work on bitrate and others work on quality. Need to have both exposed and can allow user to select whatever works
- Added shortcut to Control Panel->Tablet PC settings in the app. This button makes it easy to setup.



- When you plug in a new camera we automatically pop up asking if user wants to add camera to RS, eliminates all the clicks required to go to this menu.
- Screen record – can now specify the default recording path so user can change it
- Airplay\chromecast default server will be First Name + Reactiv. So, “Av Reactiv” which is more description versus the computer name as default, which was not clear
- T laser pointer only starts fading out ***WHEN*** you stop writing. So it keeps a long sentence on the screen, and only starts fading out after you stop for a period of time. Feels way better!
- Youtube help videos play more reliably. Still have some errors, but much rarer and clicking refresh usually fixes it. I know you had a lot of problems.