

Reactiv SUITE



http://192.168.0.87/Reactiv/

42.8%
Of our projects came from
Embracing new clients this year.

CONDO #
Design

9:45
Monday, September 19

Year	2018	2019	2020	2021
Q1	\$100M	\$120M	\$150M	\$180M
Q2	\$110M	\$130M	\$160M	\$190M
Q3	\$120M	\$140M	\$170M	\$200M
Q4	\$130M	\$150M	\$180M	\$210M

Average Sale Prices for Chapin in the last 12 months

Property	Price	Area
Unit 101	\$120,000	1,200 sq ft
Unit 202	\$150,000	1,500 sq ft
Unit 303	\$180,000	1,800 sq ft
Unit 404	\$210,000	2,100 sq ft

Reactiv Services



Reactiv LAUNCH

Reactiv LAUNCH creates a seamless user experience for all Reactiv Ecosystem applications. It curates the user experience, allows IT to configure the software and controls access to desktop and operating system.

Designed specifically for public space users such as boardrooms and workshare spaces where multiple users can login and access their individual workspaces.



Kiosk Mode

Locks down the PC and prevents unauthorized access and changes to the Operating System.



Folder & Content management

Allow users to access their own folders and files, both on-prem or on the network.



IT Management

Allows IT to manage application to meet security and data compliance requirements.



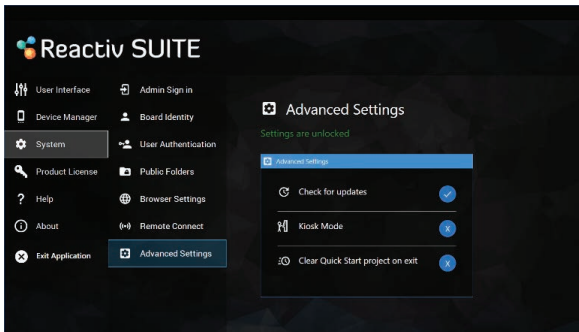
VC Integration

Users can launch mainstream video conferencing solution directly within Reactiv SUITE.



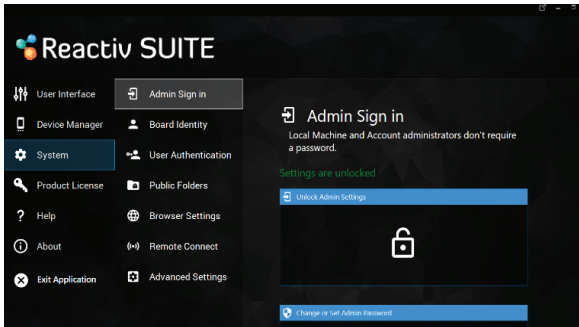
Peripheral Device Management

Upgrade firmware, configure and manage supported peripherals directly from Reactiv.



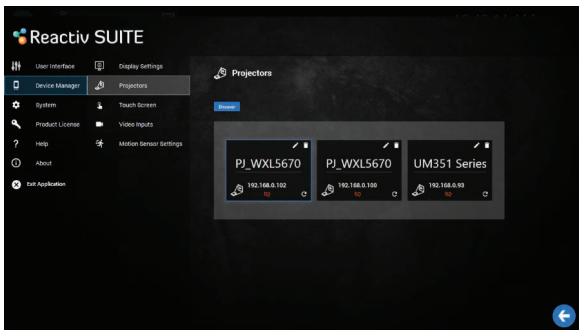
Kiosk Mode

In public spaces IT administrators can restrict access in order to honor corporate security policies. Integrated functionality allows for simplified deployment in a corporate environment.



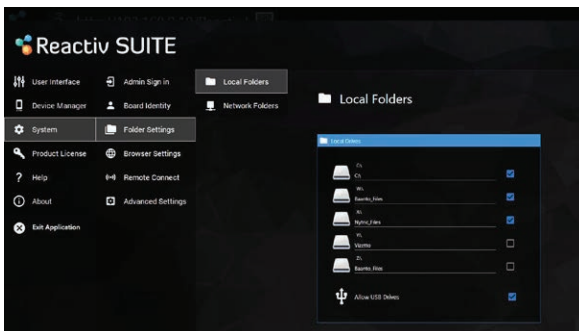
IT Management

Configure Reactiv and all its capabilities such as connectivity, security and access in order to comply with your corporate requirements. Password protect the configuration and lock it down.



Peripheral Device Management

Reactiv is the universal interface for your boardroom hardware, removing the need for third-party software and additional components. Easily control devices such as projectors, A/V sources and cameras directly from Reactiv, making it easy for anyone to use the boardroom.



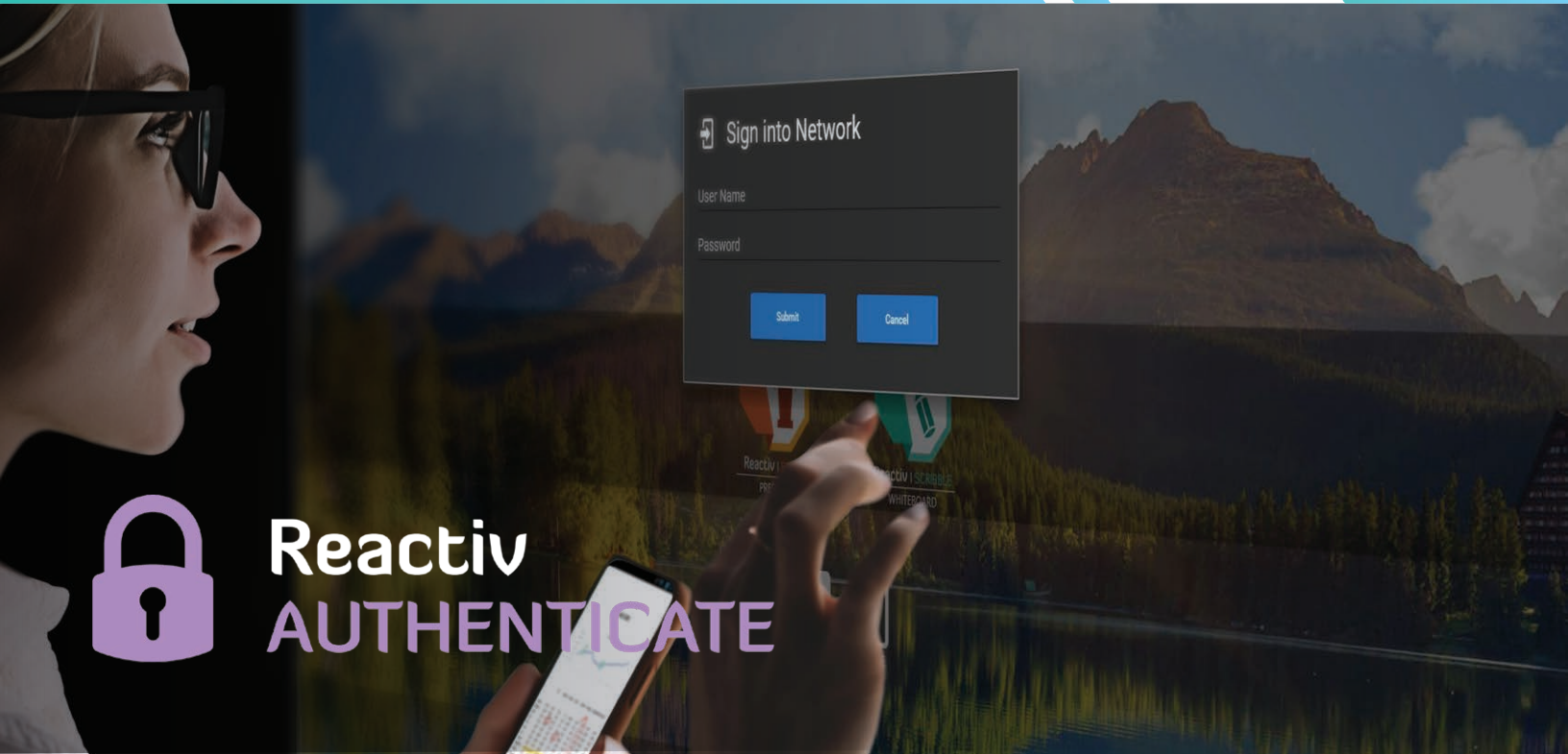
Folder & Content management

Curate and restrict what is visible to the end user. Any network path can be mapped through this menu. Allows IT to configure data access, on a per user per folder basis, while honoring corporate policies.



VC Integration

Easily launch your preferred web conferencing app directly from Reactiv and start presenting instantly.



Reactiv AUTHENTICATE

Reactiv AUTHENTICATE allow users to use their existing credentials to start a Reactiv session and access their data, whether it is on-prem, on the company network or on the cloud. No app to download, no complication.



Microsoft Active Directory

Integrated secure login and network data access using user existing domain credentials.



Drop Box

Integrated secure login and data access using existing Drop Box user credentials.



Office 365 - Teams

Integrated secure login and data access using existing Office 365 user credentials.



Single Sign On

Integrated support for existing Single Sign-On authentication.



Google Drive

Integrated secure login and data access using existing Google Drive user account.



Reactiv CONNECT

Integrated services that seamlessly connects in-room devices into the Reactiv Ecosystem.



AirPlay

Cast any Apple mobile, tablet or laptop screen in the room, natively, with a click.



Miracast

Cast any Windows 10 and supported Android devices in the room natively.



Chromecast

Cast any supported Android and Chrome devices in the room natively.



A/V Input

Connect video inputs such as laptops and external feeds to display directly inside Reactiv.



Webcams

Webcams can be displayed in the workspace and manipulated as any other object.



File Drop

Every device in the boardroom can wirelessly upload files and folders to the IWB. No plugins, no drivers, no downloads.



Integrated Browser

Users can display and interact with any web content live in their workspace.



Remote Keyboard

Use your Smartphone & Laptops as wireless keyboards.



AirPlay, Miracast & Chromecast

Multiple users can simultaneously share their screens live from their chair. Shared screens can be independently arranged, manipulated and can interact together with any other media in the workspace. No cable, no dongles, no app, no plugin. There is no limitation to the workflow!



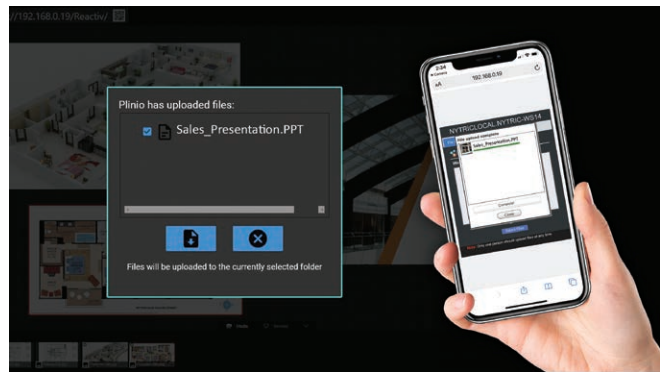
A/V Input

Leverage your existing infrastructure and cabling by allowing Reactiv to manage all the feeds in your boardroom. In addition, allows for screens and video feeds to be shared in secure environments where wireless sharing is restricted.



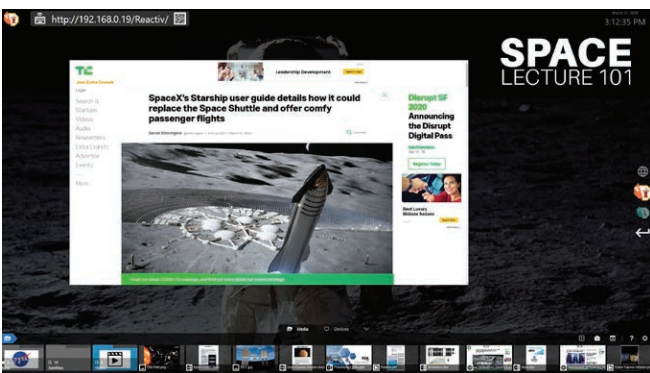
Webcams

Supports multiple webcam feeds to facilitate switching quickly between different perspectives like first-person, room cam and third person. Create a studio like environment, with different angles, and easily control the view being presented.



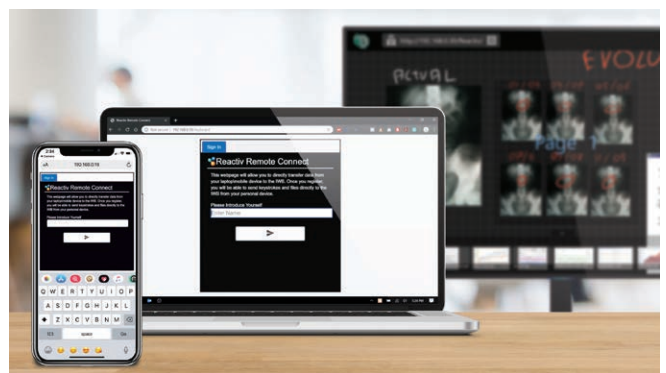
File Drop

Hardware agnostic, requires no plugins, apps or additional software. Minimizes the time spent on transferring files to the IWB, allowing the presenter to shift focus from pre-meeting preparations and connectivity issues to the narrative of their presentation.



Integrated Browser

Save web pages to present, compare, markup and manipulate like any other object on-screen.



Remote Keyboard

Privately enter passwords, large strings of data, lengthy web links, maps, etc. directly into Reactiv SUITE using your mobile or laptop keyboard.